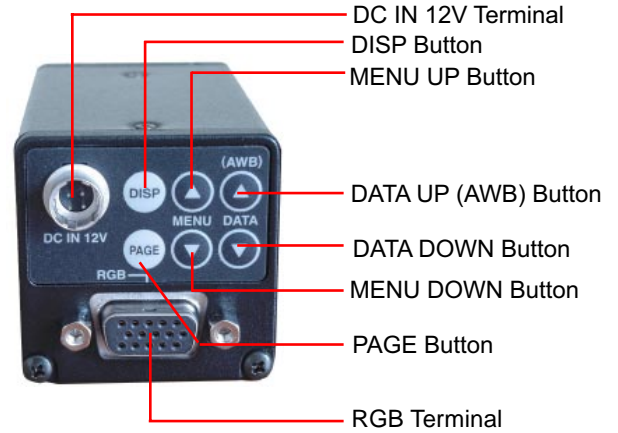


- › 3CCD Progressive Scan
- › 1024x768 Resolution
- › Field removable/replaceable IR-Cut Filter
- › Partial Scanning
- › Up to 90 Frames Per Second
- › On-Screen and RS-232C Setup
- › Color Shading Correction
- › Asynchronous Reset
- › Shutter Speeds from 1/100 to 1/100,000 sec.
- › Long-Term integration
- › Compact Design

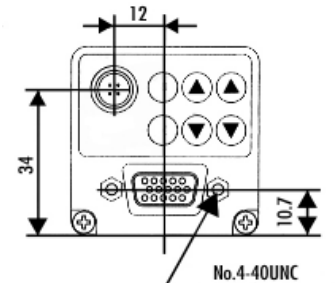
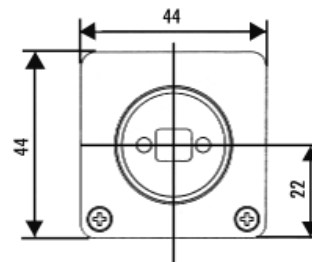
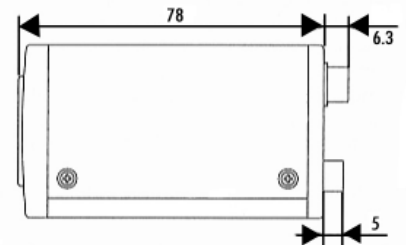
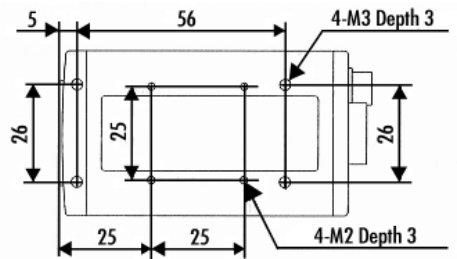
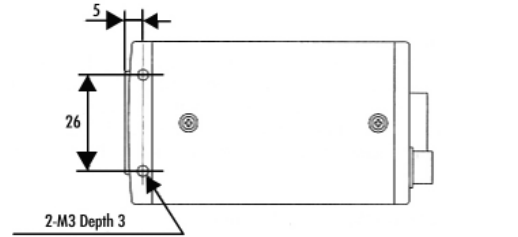
SPECIFICATIONS

Scanning System:	Progressive Scan
Image Sensor:	3 x 1/3" CCD
Resolution:	1024 x 768 pixels
Pixel Size:	4.65 x 4.65 μm
Frame Rate:	29.18 Frames Per Second
Pixel Clock:	29.5 MHz
Horizontal Frequency:	23.229 KHz
Horizontal Resolution:	768 TV Lines
Sensing Area:	4.8(h) x 3.6(v) mm
S/N Ratio:	60 dB
Sensitivity:	F6.8 standard (2000 Lux, 3000k)
Minimum Illumination	14 Lux (F2.2, Sensitivity + 18 dB, 3000k)
Gamma:	1.0
Video Output:	Analog RGB
Sync.Output Modes:	On All, On Green, All Off and Separate
Electronic Shutter:	OFF, 1/100, 1/250, 1/500, 1/1000, 1/2000, 1/4000, 1/10,000, 1/25,000, 1/50,000, 1/100,000 Sec.
External Trigger Modes:	1P SNR, 1P SR, PW SNR, PW SR, RR
Synchronization:	Internal/External
Pulse Width Control:	2μs to ∞
Lens Mount:	C-Mount (4mm maximum thread length)
Dimensions	44(W) x 44(H) x 78(D) mm
Weight:	165 grams
Power Suply:	12 V DC +/- 10%
Power Consumption:	3.6 W
Operating Temperature:	32° to 104° F (0° to 40° C)
Humidity:	Less than 90%

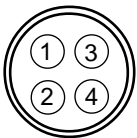


DIMENSIONS

Units in mm

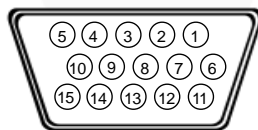


PIN ASSIGNMENTS



DC IN 12V

- 1 +12V
- 2 +12V
- 3 GND
- 4 GND



RGB

- | | |
|--------|--------------|
| 1 R | 9 12V |
| 2 G | 10 GND |
| 3 B | 11 RXD |
| 4 TXD | 12 TRIG |
| 5 GND | 13 HD IN/OUT |
| 6 GND | 14 VD IN/OUT |
| 7 GND | 15 INDEX |
| 8 SYNC | |